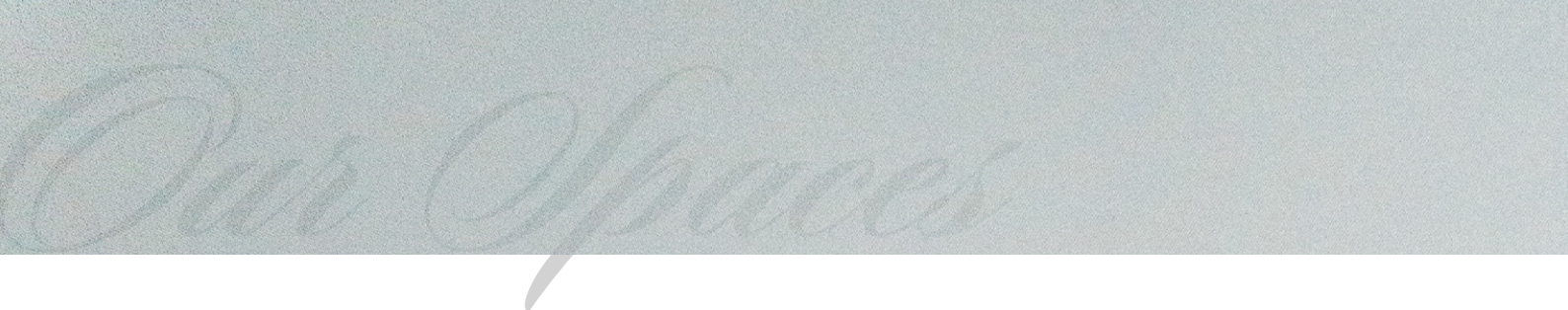


# *Function Spaces*

## WACA GROUND



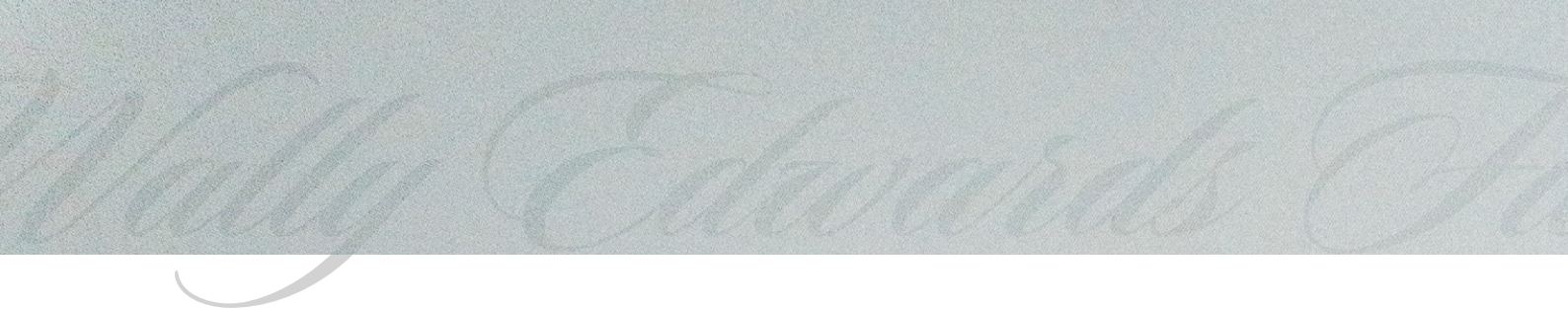


## OUR SPACES

Located in the heart of East Perth on Whajduk Country, the WACA Ground is one of Perth's most iconic venues.

Set against the stunning backdrop of the Swan River, our event spaces blend heritage charm with modern - offering the perfect setting for any occasion. From brainstorming the latest and greatest ideas with colleagues, to celebrating a milestone, we've got a unique space ready to bring your event to life. Our team are experts at creating unforgettable experiences and they'll be by your side for the entire process, ensuring your vision becomes reality.



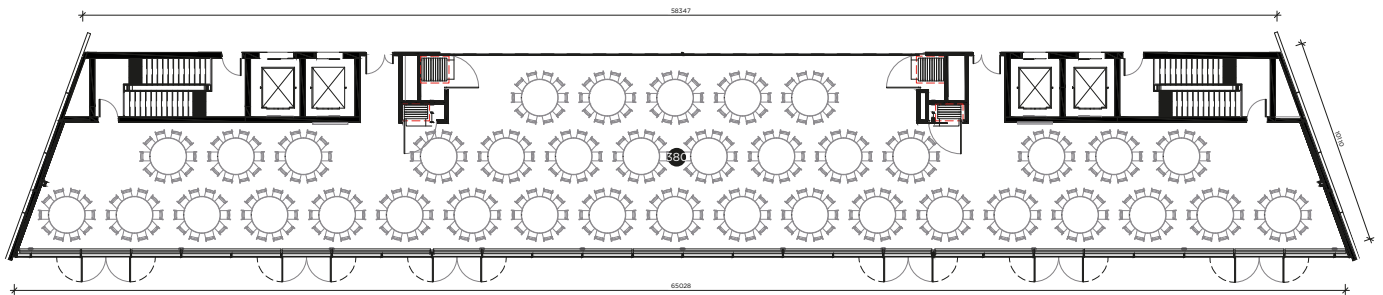


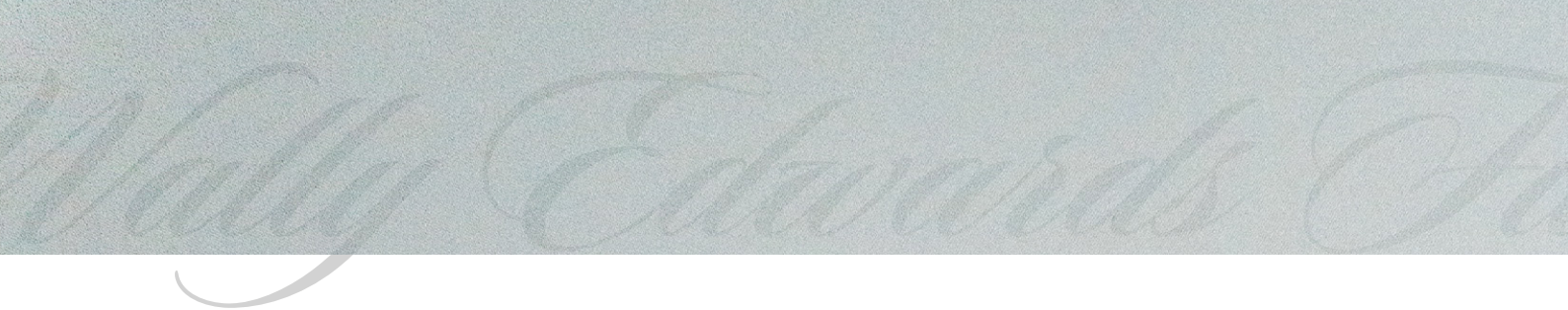
# WALLY EDWARDS FUNCTION CENTRE

**BANQUET: 380    CABARET: 304    COCKTAIL: 500**

Overlooking the iconic pitch through floor to ceiling windows, the Wally Edwards Function Centre is our premier event space. Created when three event rooms are combined, this long, airy room can host up to 500 guests in various event configurations.

Built in AV and optional access to a private bar and our Terrace Bar makes this space well suited to cocktail parties, conferences, sit down dinners and more.





# WALLY EDWARDS FUNCTION CENTRE ROOMS

Three fully equipped rooms make up the Wally Edwards Function Centre. These spaces can be used individually for meetings and intimate dining experiences, or combined to accommodate larger events and conferences with breakout rooms.

The best of modern technology and sweeping views of the WACA Ground pitch and Swan River, these rooms offer flexibility to design a broad range of experiences.

## FUNCTION ROOM A

- | Banquet: 90
- | Cabaret: 72
- | Theatre: 80
- | Cocktail: 130
- | Classroom: 36
- | U-Shape: 34

## FUNCTION ROOM C

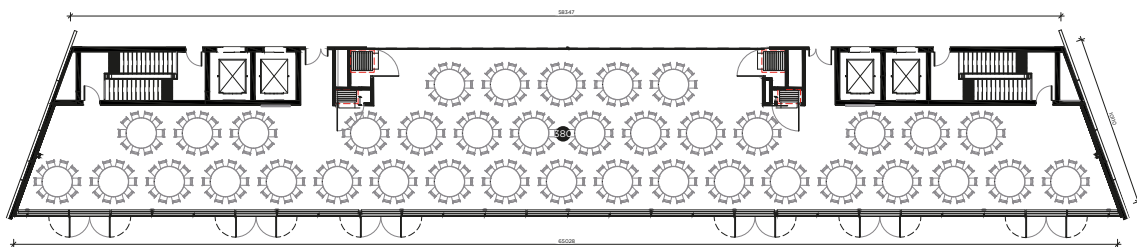
- | Banquet: 90
- | Cabaret: 72
- | Theatre: 80
- | Cocktail: 130
- | Classroom: 36
- | U-Shape: 34

## FUNCTION ROOM B

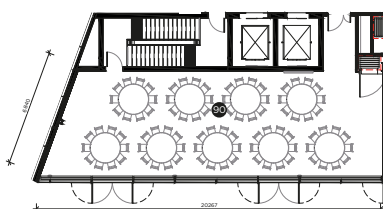
- | Banquet: 180
- | Cabaret: 144
- | Theatre: 190
- | Cocktail: 246
- | Classroom: 120

## FUNCTION ROOM B COMBINED WITH A OR C

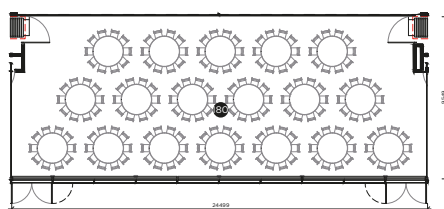
- | Banquet: 280
- | Cabaret: 224
- | Theatre: 270
- | Cocktail: 360
- | Classroom: 150



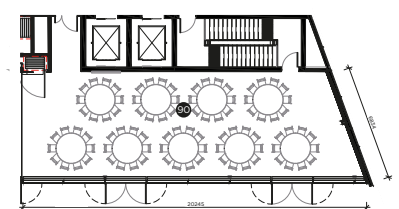
FUNCTION ROOM - OPEN



FUNCTION ROOM A



FUNCTION ROOM B



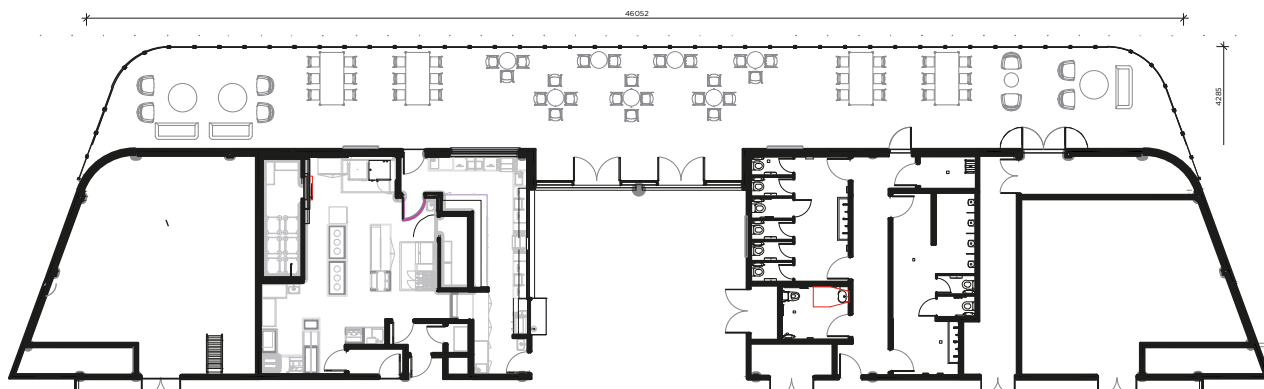
FUNCTION ROOM C



## TERRACE BAR

### COCKTAIL: 190

The perfect location to start or conclude an event, the Terrace Bar offers unparalleled views of the Matagarup Bridge and Swan River, while snacking on canapes or sipping classy cocktails. Choose from our range of high and low seating options or bump in your own to create a perfect space for your guests to mingle.



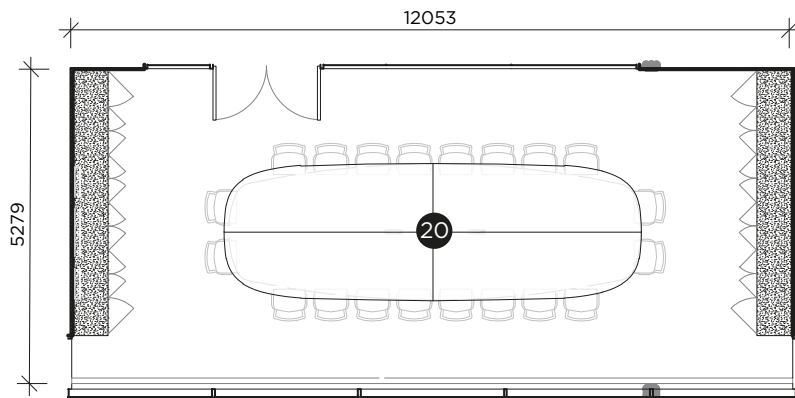
# Boardroom

## BOARDROOM

### BOARDROOM: 20

Host up to 20 guests in an intimate, purpose-built space designed for focused meetings and meaningful conversations.

Featuring modern AV technology, this setting is ideal for brainstorming sessions, strategic planning, and making key decisions in comfort and style.



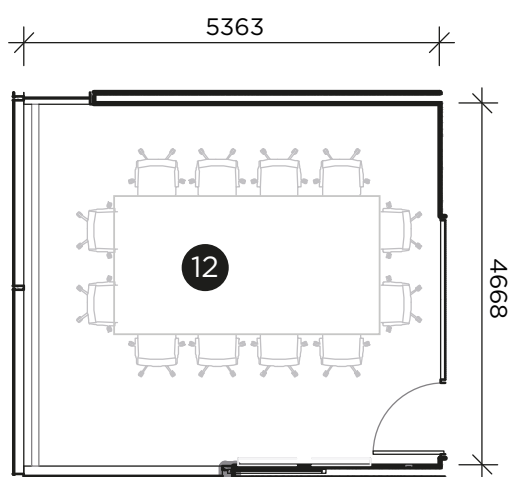


# CAPTAINS' ROOM

## BOARDROOM: 12

Filled with natural light and equipped with modern AV technology, the Captains' Room offers a refined setting for intimate corporate gatherings of up to 12 guests.

Available in boardroom, it's a versatile space ideal for board meetings, presentations, or private business events.

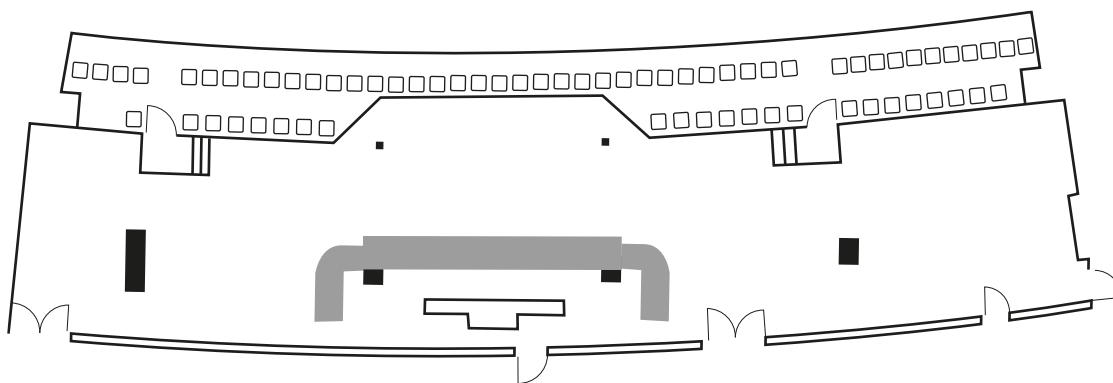


# Bradman Room

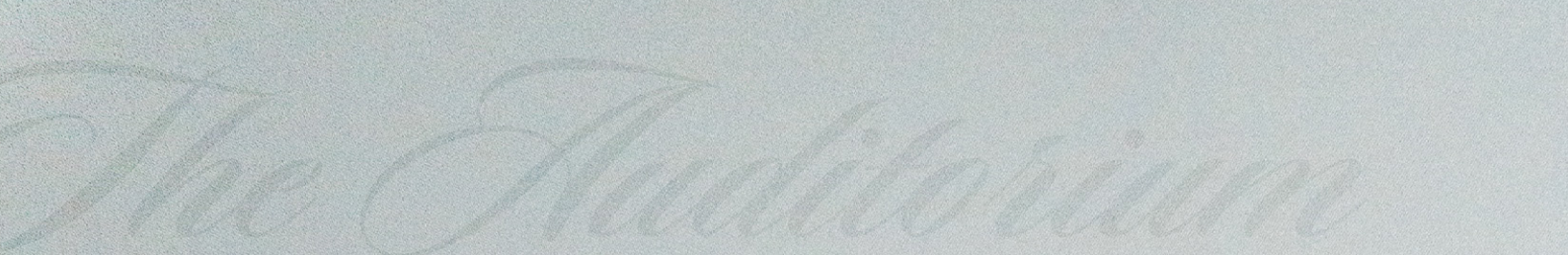
## BRADMAN ROOM

BANQUET: 50    CABARET: 40    THEATRE: 30    COCKTAIL: 170  
BOARDROOM: 24    CLASSROOM: 12    U-SHAPE: 12

Step into a room steeped in heritage. With walls showcasing WA Cricket's prestigious Gallery of Greats, this versatile space offers a truly inspiring backdrop. Ideal for smaller-scale meetings, cocktail evenings, and breakfast events, it combines history and atmosphere in a setting designed to impress.



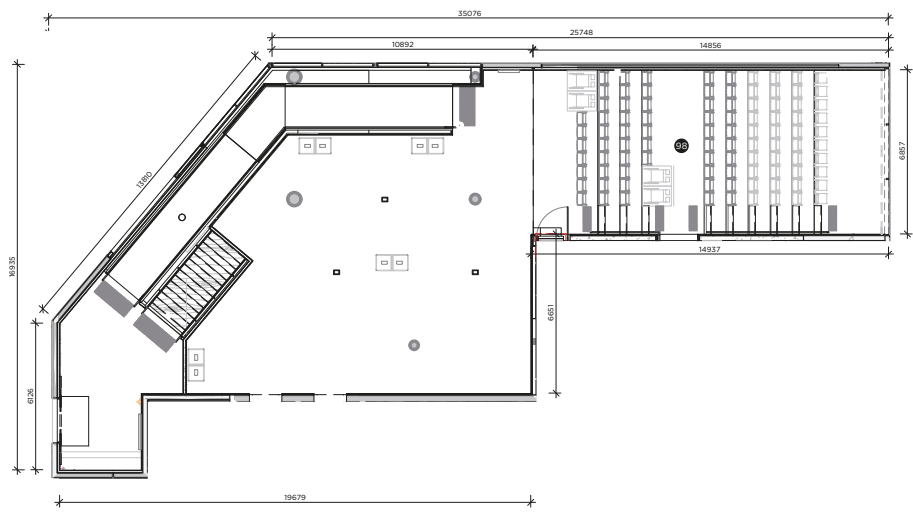




# AUDITORIUM

**TIERED SEATING: 98**

Set within the heart of the museum, the auditorium offers a purpose-built space for lectures, film screenings, and presentations, surrounded by a rich atmosphere of culture and history. With tiered seating and integrated AV facilities, it provides a comfortable and engaging environment for audiences of all sizes.

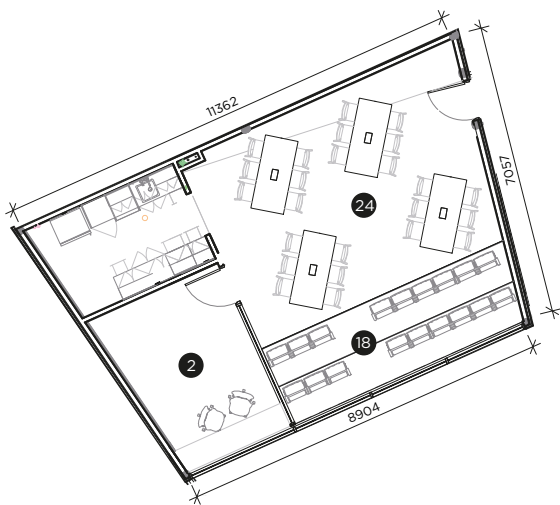




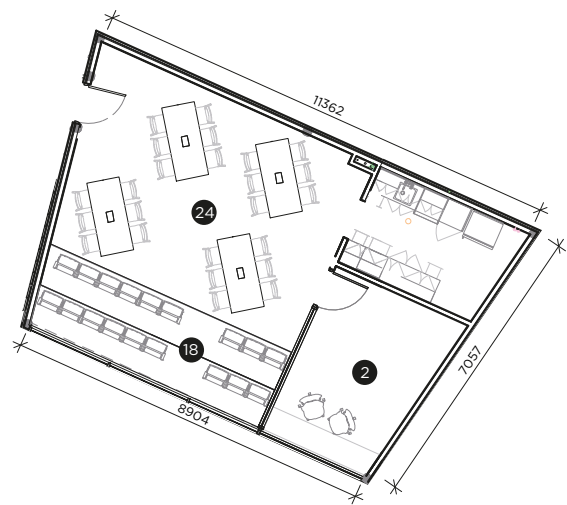
## HOME & AWAY VIEWING ROOMS

**COCKTAIL: 32    BOARDROOM: 14    CLASSROOM: 20    THEATRE: 26    U-SHAPE: 20**

Used on match day by home and away teams, the newly designed Viewing Rooms offer a contemporary setting right beside the pitch, ideal for workshops and meetings that benefit from a dynamic and inspiring atmosphere along with modern AV solutions.



VIEWING ROOM (HOME)



VIEWING ROOM (AWAY)





## KIM HUGHES ROOMS

### EAST & WEST

- | Cocktail: 120
- | Boardroom: 48
- | Classroom: 32
- | Banquet: 60
- | Cabaret: 48
- | Theatre: 100

### EAST

- | Cocktail: 60
- | Boardroom: 26
- | Classroom: 24
- | Banquet: 40
- | Cabaret: 32
- | Theatre: 40
- | U-Shape: 20

### WEST

- | Cocktail: 50
- | Boardroom: 18
- | Classroom: 18
- | Banquet: 20
- | Cabaret: 16
- | Theatre: 30
- | U-Shape: 20

Once the traditional player viewing areas, Kim Hughes Rooms offer a unique blend of sporting heritage and modern functionality.

Equipped with full AV capabilities with the ability to be sub-divided into smaller spaces, these historic rooms are perfectly suited for corporate meetings, presentations, and professional gatherings.

## LANGERS LOUNGE

### COCKTAIL: 200

Langers Lounge is a covered outdoor area offering relaxed open-air vibe ideal for a range of casual events. Whether it's a sit-down breakfast or afternoon barbeque, this space is perfect for relaxed, alfresco get togethers.

# Boundary Room

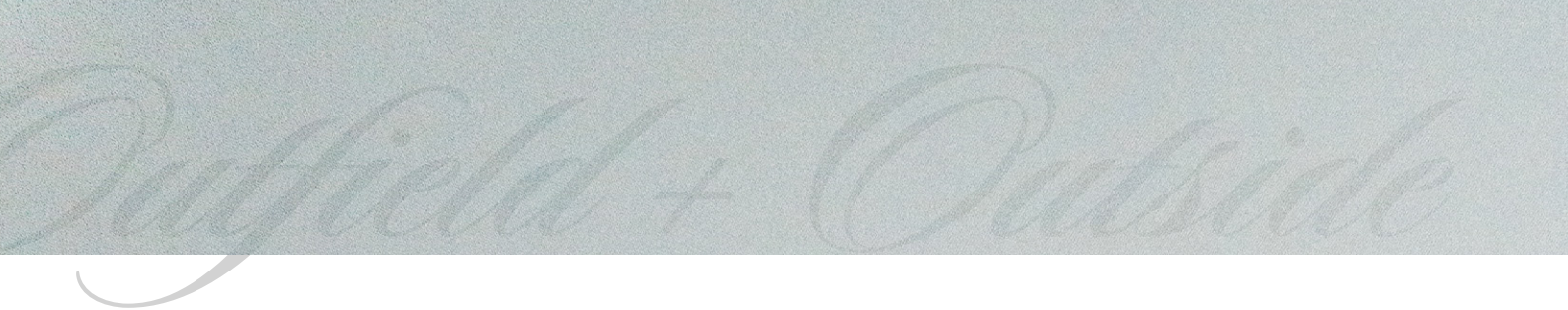
## BOUNDARY ROOM

**BANQUET: 350    CABARET: 280    THEATRE: 380    COCKTAIL: 496**

Our largest indoor space, Boundary Room is ideal for hosting conferences, exhibitions, formal dinners, breakfasts, and awards nights.

Fully equipped with modern AV capabilities, the room can also be subdivided to create a more intimate setting tailored to your event's needs.





## FARLEY STAND

COCKTAIL: 250

Perfect for cocktail-style events, the Farley Stand combines a relaxed outdoor atmosphere with the excitement of being close to the heart of the action due to its close proximity to the pitch.

## THE OUTFIELD

17,800m<sup>2</sup>. CAPACITY ON APPLICATION.

For those who have dreamed of stepping out onto the iconic WACA Ground, the Outfield offers an experience that cannot be rivalled elsewhere in Western Australia, or Australia.

As completely blank slate that is ready for your vision, the Outfield has limitless possibilities for an unforgettable event.



# Room Capacities

## ROOMS SUMMARY

	Area m <sup>2</sup>	Cocktail	Boardroom	Theatre	Classroom	U-Shape
Wally Edwards Function Room A, B & C	482	500	-	-		
Wally Edwards Function Room A	125	130	-	80	36	24
Wally Edwards Function Room B	230	246	-	190	120	-
Wally Edwards Function Room C	125	130	-	80	36	34
Wally Edwards Function Room B & C	355	360	-	270	150	-
Terrace Bar	185	190	-	-	-	-
Boardroom	67	-	20	-	-	-
Captains' Room	26	-	12	-	-	-
Auditorium	101	-	-	98	-	-
Players Viewing Home & Away	66	32	14	26	20	20
The Concourse	1115	1200	-	-	-	-
South Concourse	450	480	-	-	-	-
North Concourse	355	380	-	-	-	-
Boundary Room	462.9	350	496	-	380	-
Boundary Rom South	451.3	200	320	-	290	-
Boundary Room North	TBA	50	150	-	50	-
Kim Hughes Room	97.6	120	48	100	32	-
Kim Hughes Room West	42.9	50	18	30	18	20
Kim Hughes Room East	54.6	60	26	40	24	20
Bradman Room	184.2	170	24	30	12	12
Langers Lounge	249	200	-	-	-	-



**Nelson Crescent, East Perth, 6004**

**Email:** [functions@wacricquet.com.au](mailto:functions@wacricquet.com.au)

**Web:** [wacaground.com.au/organisers/our-spaces/](http://wacaground.com.au/organisers/our-spaces/)

**Socials:** @wacaground